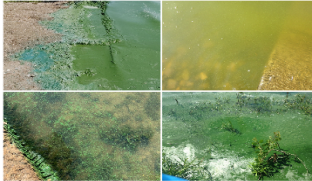


**Know It. Avoid It.  
Report It.**

Blue-green algae can be harmful to humans and pets.



Blue-green algal blooms may look like:

- Green Scum
- Crust
- Puff Balls
- Cottage Cheese
- Grass Clippings
- Spilled Paint

**General Safety Tips**

- Avoid areas of scum when boating.
- While fish are safe to consume, take the following precautions.
  - Rinse hands with non-lake water after landing fish.
  - Wash fish thoroughly with tap water before cleaning.
- Contact your health provider or veterinarian if you or your pet become ill after swimming.

**When in doubt, Stay out!**



To Report Algal Blooms or Check Lake Status:  
701-328-5210  
[www.tinyurl.com/WMP-HABs](http://www.tinyurl.com/WMP-HABs)

**WATER ADVISORY**

This water may contain blue-green algae that can be harmful to humans and pets.

To reduce the risk of illness:

- Avoid swimming, waterskiing, or tubing if the water looks like spilled green paint or pea soup.
- Avoid swallowing water and watch small children and pets who may ingest water.
- Rinse off with non-lake water after swimming.



**General Safety Tips**

Avoid areas of scum when boating.

- While fish are safe to consume, take the following precautions.
- Rinse hands with non-lake water after landing fish.
  - Wash fish thoroughly with tap water before cleaning.

Contact your health provider or veterinarian if you or your pet become ill after swimming.

For more information call the North Dakota Department of Environmental Quality.  
701-328-5210



**WATER WARNING**



This water contains high concentrations of blue-green algal toxins that can be harmful to humans and pets.

**AVOID CONTACT WITH THE WATER**

For your safety:

- Do not swim, waterski, or tube in the water.
- Do not swallow the water.
- Closely monitor children and pets who may have ingested lake water.

**General Safety Tips**

Avoid areas of scum when boating.

- While fish are safe to consume, take the following precautions.
- Rinse hands with non-lake water after landing fish.
  - Wash fish thoroughly with tap water before cleaning.

Contact your health provider or veterinarian if you or your pet become ill after swimming.

For more information call the North Dakota Department of Environmental Quality.  
701-328-5210



**Harmful Algal Bloom Water Advisories/Warnings**

**10/29/2021**

**Advisories**

Lake Name	County	Date Posted
Epping-Sprinbrook Dam	Williams	9/20/2021

**Warnings**

Lake Name	County	Date Posted
Reule Lake	Stutsman	10/4/2021
Stump Lake (EAST)	Nelson	10/25/2021