



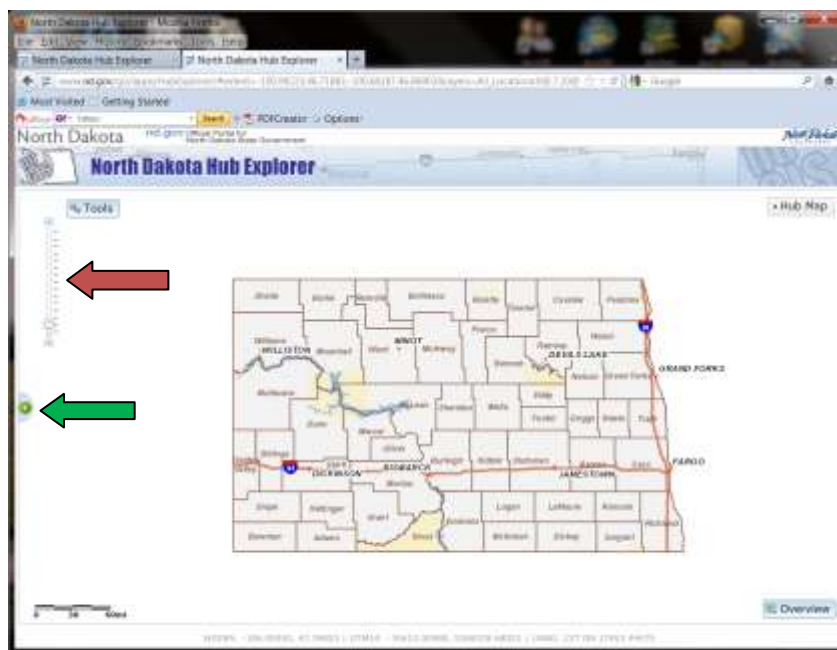
How to Use the ND GIS Hub Explorer to View and Download Community and Non-Community Wellhead and Source Water Protection Layers

Groundwater Program

July 2016

1. Start your internet browser and go to <http://www.nd.gov/gis/apps/HubExplorer/>. The Hub Explorer has been tested on a number of browsers including Internet Explorer, Firefox, Chrome, and it has had limited testing on Opera and Safari. Please note that if you use Internet Explorer we highly recommend that you use version 9 (or later) with Compatibility View turned off (located to the right of the URL field; it looks like a torn page and should display as gray) as there are performance and other issues with versions prior to 9.

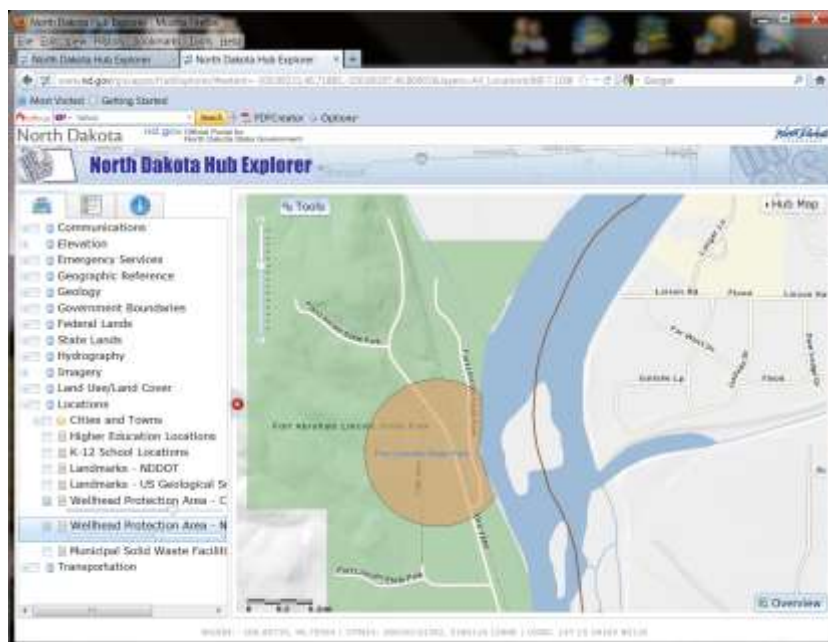
2. A map of North Dakota will appear when you first open the Hub Explorer. You can zoom in or out by



either using the roller ball on your mouse or the slider bar (shown by red arrow, below) on the left side of the screen. To re-center the map, click and drag to the point of interest. Additional features will appear as you zoom in on the map for a closer look.

3. Click on the green plus sign (+) on the left of the screen (shown by green arrow) to show the list of available layers. The layers are organized in folders of similar data. Click on “Locations,” then check the box next to “Wellhead Protection Area - Community” and “Wellhead Protection Area - Non-Community”.

> *NOTE: You can resize the width of the legend or table of contents to view the full layer name, or use the scroll bars to view the complete layer name.*

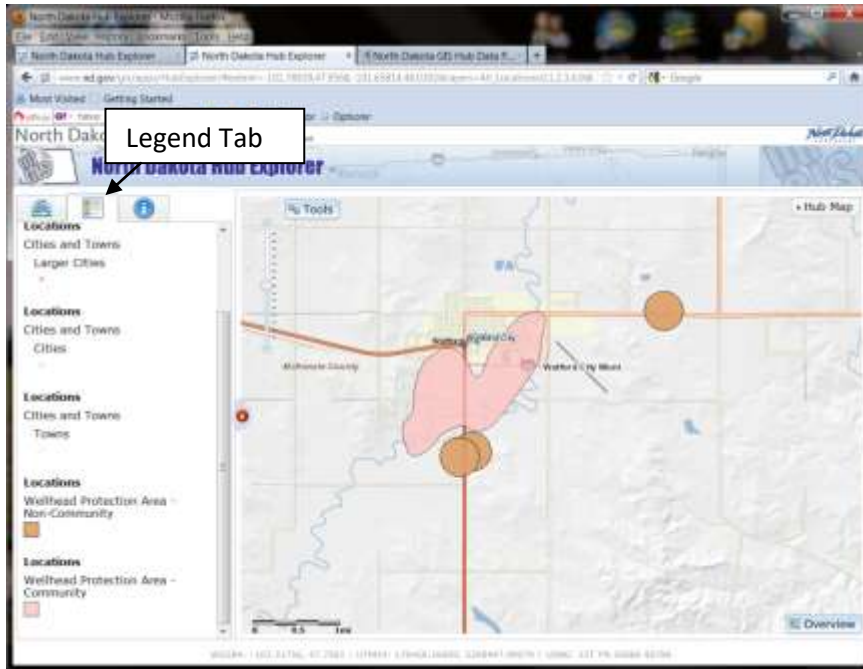


4. The wellhead protection area (WHPA) layers will not be

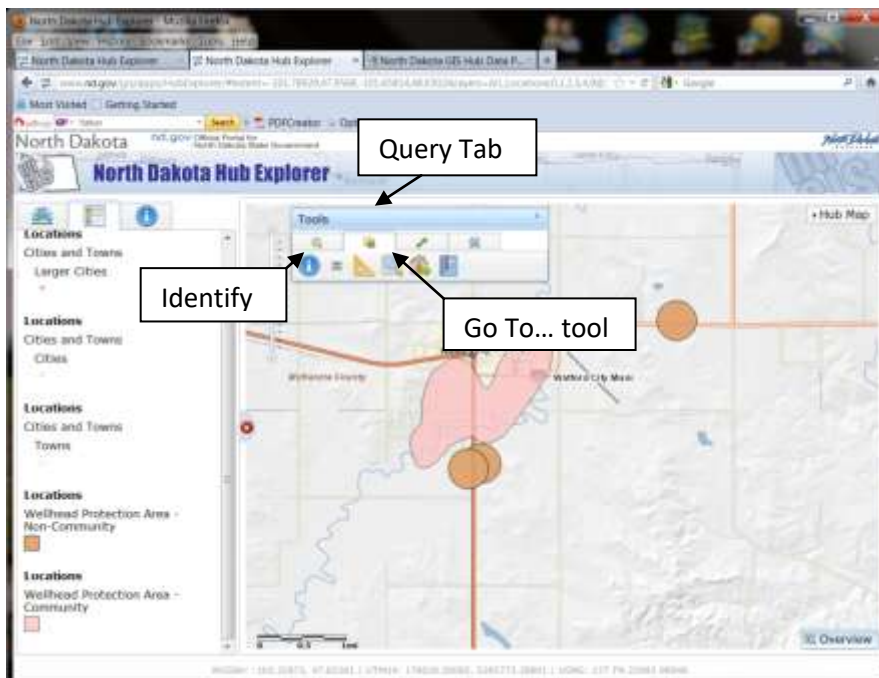
visible at the state level. As you zoom in, the WHPA layers will become visible. You can control the opacity of the layers by using the slider bar that is below the layer name.

5. To see the legend, click on the “Legend” tab which is the center tab, as shown below.

> NOTE: To see what a tool or tab does on the Hub Explorer, hover your mouse on the item in question and tips will appear.



6. You can search for a particular town by name using the Query Tools. Click on the “Tools” button, and then click on the “Query” tab (shown below). You can use the “Identify” tool to identify the particular WHPA layer that is shown, or the “Go To...” tool to search for a particular city or location.

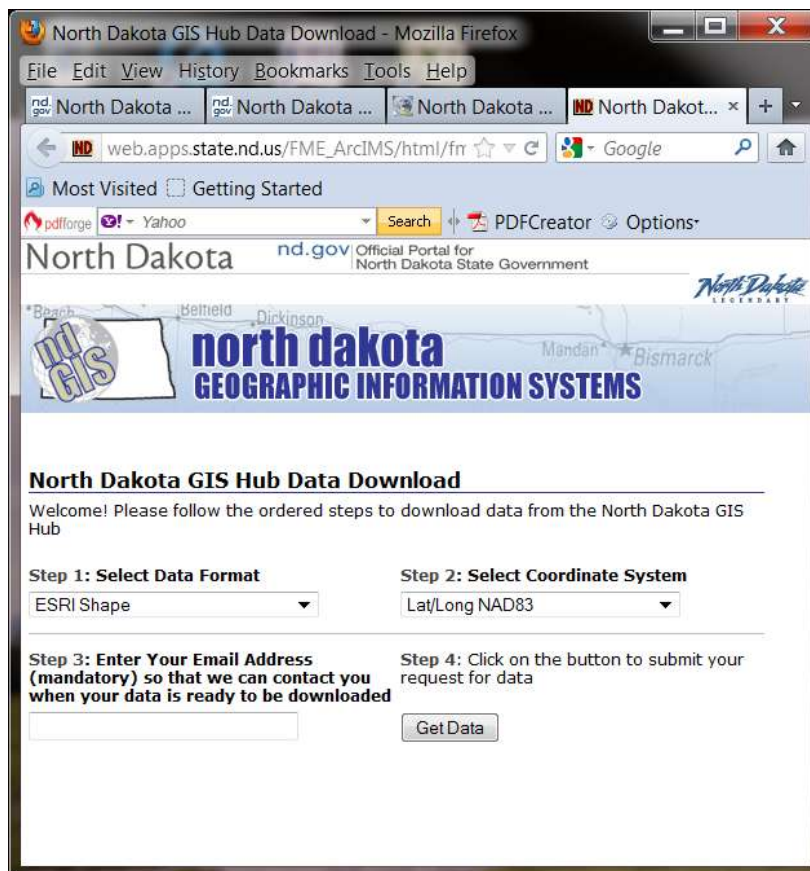


7. To download the WHPA layers for use in a GIS, click on the icon to the left of the layer name in the table of contents. A new window will open that shows the *metadata*, or data about the data. The



Distribution information contains the transfer options to view the layers as an online resource and download information, as well as WMS and KML file information.

Files can be downloaded in a variety of formats, including Esri shapefile and AutoCAD. Simply enter the format desired, the coordinate system and email address, click “Get Data.” You will receive an email and be directed to an ftp site when your data is ready to be downloaded.



Data are updated weekly. Check the source date and currentness reference in the metadata to make sure that you have the most recent data available.