

# Recycling Options for Inert Waste

North Dakota Department of Health  
Solid Waste Program

# Outline

- Appliances/ Scrap Metal
- Asphalt/ Concrete
- Compost
- Electronics
- Scrap Tires
- Wood

# Beneficial Use of Inert Waste

- Guideline 38: Beneficial Use of Inert Waste:  
<http://www.ndhealth.gov/wm/Publications/Guideline38BeneficialUseOfInertWaste.pdf>

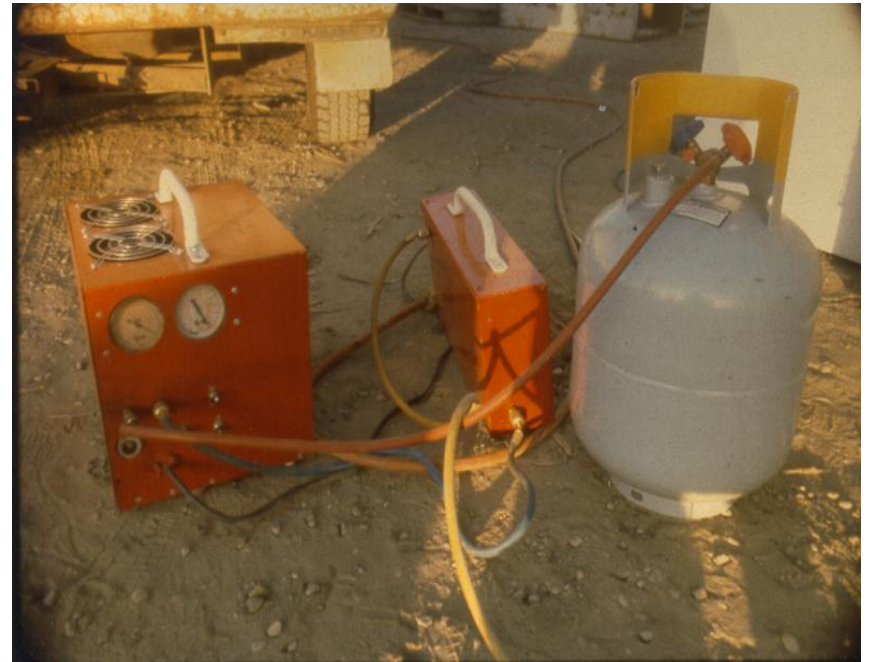
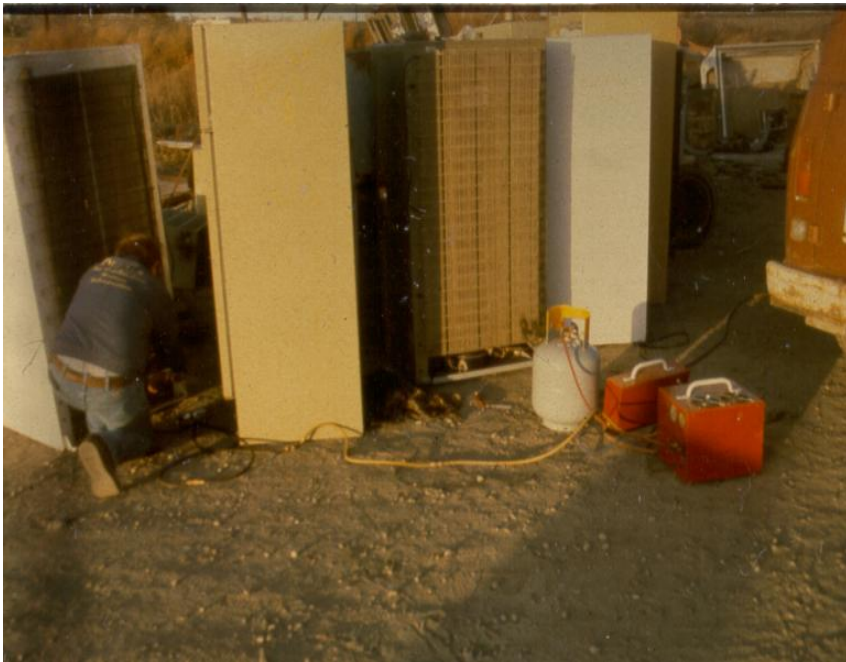
# Appliances/Scrap Metal Issues

- Scrap metal in a landfill can damage equipment and create safety hazards
- Scrap metal is prohibited from disposal
- Refrigerators and appliances must be “lined out”
- Federal law requires that all Freon/refrigerant be removed

# Appliances/Scrap Metal Recycling



# Appliances/Scrap Metal Recycling



# Appliances/Scrap Metal Recycling



# Appliances/Scrap Metal Recycling

- List of scrap metal and auto recyclers:  
<http://www.ndhealth.gov/wm/Publications/ScrapMetalAndAutoRecyclersList.pdf>
- Guideline 15: Recycling Metal Appliances and Other Scrap Metal:  
<http://www.ndhealth.gov/wm/Publications/Guideline15RecyclingMetalAppliancesAndOtherScrapMetal.pdf>
- Appliances Made Chiefly of Plastic:  
<http://www.ndhealth.gov/wm/Publications/ManagementOfAppliancesMadeChieflyOfPlastic.pdf>



# Asphalt/Concrete Recycling



# Asphalt/Concrete Recycling



# Asphalt/ Concrete Recycling

- List of concrete/asphalt recyclers:  
<http://www.ndhealth.gov/wm/Publications/ConcreteAsphaltRecyclingFacilities.pdf>

# Composting Issues



# Composting



# Composting

- Composting In Your Backyard brochure:  
<http://www.ndhealth.gov/wm/Publications/CompostingInYourBackyard.pdf>
- Recycling Grass Clippings brochure:  
<http://www.ndhealth.gov/wm/Publications/RecyclingGrassClippings.pdf>
- Using Compost and Wood Chips brochure:  
<http://www.ndhealth.gov/wm/Publications/UsingCompostAndWoodChips.pdf>

# Composting

- List of composting facilities:  
<http://www.ndhealth.gov/wm/Publications/CompostingFacilities.pdf>
- Guideline 34 Compost Facility Guidelines:  
<http://www.ndhealth.gov/wm/Publications/Guideline34CompostFacilityGuidelines.pdf>



# Electronics Recycling





# Electronics Recycling



# Electronics Recycling

- List of electronic recycling facilities:  
<http://www.ndhealth.gov/wm/Publications/ElectronicRecyclingFacilities.pdf>

# Scrap Tire Issues

- Difficult to bury
- Spread throughout the state
- Disease
- Fires
- Liability

# Scrap Tire Issues

**Erosion Control?**

**Big Rain Event Washed Out  
Erosion Controls**



# Scrap Tire Issues



# Scrap Tire Recycling

- Do not stockpile more than 1300 passenger tires or approximately a semi-trailer load
- Collect a fee for tire management and keep the money in a separate account
- Make sure the transporter has a waste hauler permit
- Make sure the tires are going to an approved disposal facility or processing center
- Landfill tires if needed



# Scrap Tire Recycling



# Scrap Tire Recycling





# Scrap Tire Recycling

- List of scrap tire transporters:  
<http://www.ndhealth.gov/wm/Publications/ScrapTiresTransporters.pdf>
- Guideline 21: Scrap Tire Management:  
<http://www.ndhealth.gov/wm/Publications/Guideline21ScrapTireManagement.pdf>

# Wood Waste

- Two types:
  - Natural wood waste
    - Trees, stumps, limbs, brush, root mats, logs, leaves, grass clippings and wood wastes that are generated when land is cleared for construction purposes
  - Other wood waste
    - Pallets, crates, lumber, wood chips, firewood and other products made from natural wood waste that have been processed

# Wood Waste Recycling

- Why recycle or reuse?
  - Save space in your landfill
  - Benefits the environment
  - Protects habitats
  - Reduces soil erosion
  - Controls weeds
  - Cleaner energy & fuel

# Wood Waste Recycling

- Uses:
  - Reuse for engineering wood products
  - Recycle wood chips into pulp for paper manufacturing
  - Wood chips as a fuel alternative instead of coal or natural gas
  - Landscaping mulch
  - Residential firewood
  - Playgrounds



# Wood Waste Recycling



# Wood Waste Recycling





# Wood Waste Recycling



# Wood Waste Recycling





# Wood Waste Recycling



# Wood Waste Recycling



# Wood Waste Recycling

- List of wood processors/grinders, pallet repair/sales, MSW landfills and equipment vendors:
  - <http://www.ndhealth.gov/wm/Publications/WoodProcessingRecyclingFacilitiesAndEquipmentVendors.pdf>

# Questions?

- Contact the Solid Waste Program at:
  - Bismarck Office – (701) 328-5166
  - Fargo Field Office – (701) 499-5208 – Jane Kangas
  - Gwinner Field Office – (701) 678-2308 – Tracy Lundquist
  - Sawyer Field Office – (701) 624-5332 – Kathleen Kangas